



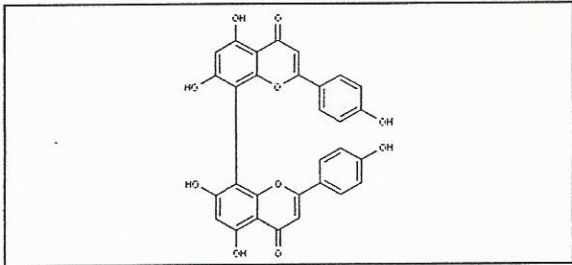
INDOFINE Chemical Company, Inc.

121 Stryker Lane, Bldg. 30
Hillsborough, NJ 08844 USA
Phone: (908) 359-6778; Fax: (908) 359-1179

Certificate Of Analysis

021281S CUPRESSUFLAVONE Lot No.: 16011203

CASRN	3952-18-9
MOL FORMULA	C ₃₀ H ₁₈ O ₁₀
MOL WEIGHT	538,46
BATCH#	16011203



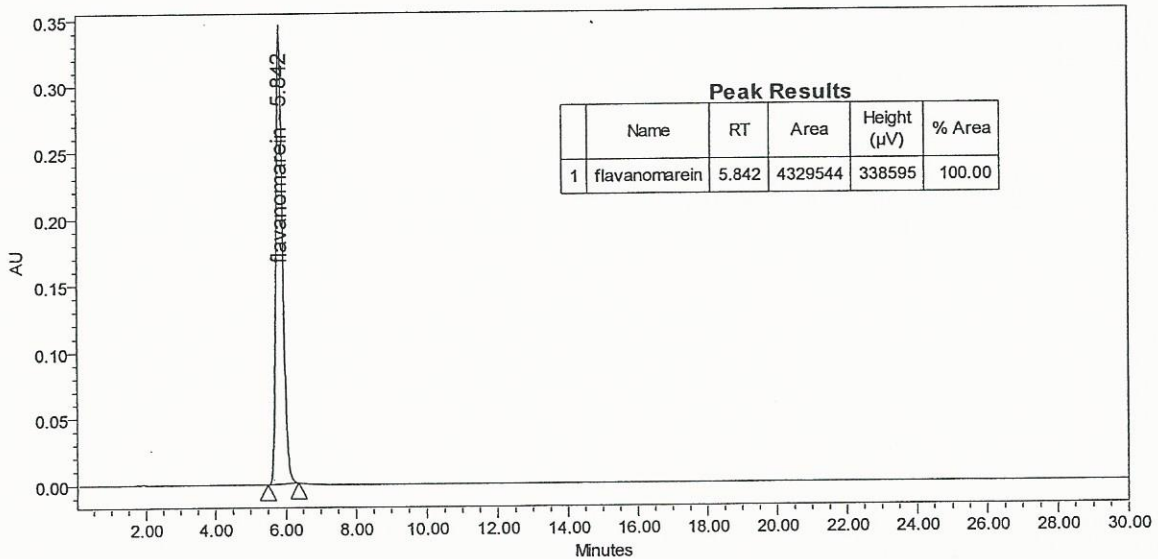
TEST	METHOD	UNIT	SPECIFICATION	RESULT
Appearance	Visual		Yellow powder	Conform
Water content	KF	%w/w		4,8
Residual solvents	GC-MS	%w/w		<0,1
Inorganics	ICP-MS	%w/w		<0,1
Purity	HPLC	%area	≥ 99,0	100,0
Assay	Calculated (*)	%w/w		95,2

(*) Assay = Purity by HPLC x (100 - %water - %solvents - %inorganics)

CHROMATOGRAPHIC PURITY / HPLC

Column: Symmetry Shield RP18 - 4,6x150 mm - 3,5 μm
 Mobile phase: Water + 5% AcOH 25 / MeOH 70 / ACN 5 (v/v/v)
 Detection: UV 270 nm

Temperature: 30°C
 Flow rate: 1 ml/min
 Injection volume: 5 μl
 Injection solvent: EtOH + 10% DMSO



LONG TERM STORAGE: Below 8°C in a dry and dark place

TRANSPORT CONDITIONS: Ambient temperature